

Product Name: FBXO22/SKP1

Alternate Names: SKP1 (S-phase kinase–associated protein 1; FBXO22 (F-box only protein 22;

Product Code: TE3-028

Quantity: 25 µg

FOR RESEARCH USE ONLY (RUO)

Storage:

Use a manual defrost freezer and avoid repeated freeze-thaw cycles. Aliquot and store ≤ -70°C (stable for 24 months from date of receipt).

Verified Applications / Usage

FBXO22/SKP1 is active in ternary complex formation assays using recombinant FKBP12 and the degrader molecule SP3CHO.

Physical Characteristics

Species: Homo sapiens (Human)

Predicted MW (kDa): 47 kDa (FBXO22) / 23 kDa (SKP1)

Source: Sf9 (S. frugiperda)

Purity: 95%

Concentration: 15-30 µM

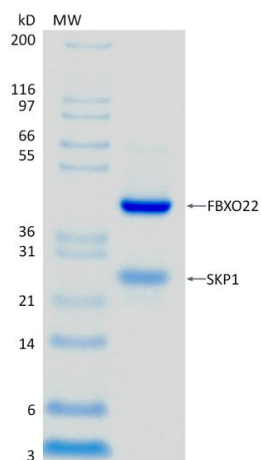
Formulation: 40 mM HEPES, 100 mM NaCl, 10% Glycerol, 1 mM EDTA, 1 mM TCEP, pH 7.6

Shipping: The product is shipped with dry ice. Upon receipt, store it immediately at the temperature recommended below.

Stability/Storage: Use a manual defrost freezer and avoid repeated freeze-thaw cycles. Aliquot and store ≤ -70°C (stable for 24 months from date of receipt).

Quality Assurance

Purity & SDS-PAGE



2 µg FBXO22/SKP1 run on 4-12% SDS-PAGE gel under reducing conditions, then visualized with Colloidal Coomassie Blue Stain.

Protein ID: F-box only protein 22;S-phase kinase-associated protein 1

Activity Assay

Ternary Complex Assay

Background

Description

FBXO22 is the substrate receptor of the CUL1-RING E3 ligase CRL1-FBXO22. Recombinant human FBXO22 is co-purified as a stable heterodimer with its adaptor protein SKP1. FBXO22 protein contains an N-terminal His8 tag.

Accession Number:
P63208;Q8NEZ5

Entrez Gene ID: FBXO22;SKP1