

**Product Name:** NEDD8

**Alternate Names:**

**Product Code:** TUB-081

**Quantity:** 1MG

**FOR RESEARCH USE ONLY (RUO)**

**Storage:**

Use a manual defrost freezer and avoid repeated freeze-thaw cycles. Aliquot and store  $\leq -20^{\circ}\text{C}$  (stable for 48 months from date of receipt).

**Verified Applications / Usage**

Recombinant NEDD8 is activated for use in vitro by recombinant NEDD8 Activating Enzyme 1. This reaction requires Mg-ATP. Appropriate protein concentrations are specific to the application.

### Physical Characteristics

**Species:** Homo sapiens (Human)

**Predicted MW (kDa):** 8.6 kDa

**Source:** E.coli BL21(DE3) A.I.

**Purity:** 95%

**Concentration:** 400  $\mu\text{M}$

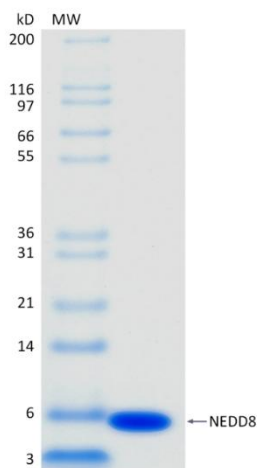
**Formulation:** 10 mM HEPES, pH 7.6

**Shipping:** The product is shipped with cold packs or dry ice. Upon receipt, store it immediately at the temperature recommended below.

**Stability/Storage:** Use a manual defrost freezer and avoid repeated freeze-thaw cycles. Aliquot and store  $\leq -20^{\circ}\text{C}$  (stable for 48 months from date of receipt).

## Quality Assurance

### Purity & SDS-PAGE



2 µg NEDD8, run on 4-12% SDS-PAGE gel under reducing conditions, then visualized with Colloidal Coomassie Blue Stain.

**Protein ID:** Ubiquitin-like protein NEDD8

## Background

### Description

NEDD8 is a ubiquitin-like molecule that is conjugated to cullin E3 ligases in an ATP-dependent manner; this process requires an E1 (UBA3/APPBP1) and an E2 (UBE2M or UBE2F).

**Accession Number:** Q15843

**Entrez Gene ID:** NEDD8

## Protein Sequence

MLIKVKTLTGKEIEIDIEPTDKVERIKERVEEKEGIPPQQQRLLIYSGKQMN  
DEKTAADYKILGGSVLHLVLALRGG