

Product Name: K48-linked Di-Ubiquitin

Alternate Names: Human Lys48-linked di-ubiquitin (Ub2K48, Ub2-K48), sometimes abbreviated K48-Ub₂

Product Code: TUB-056

Quantity: 25 µg

FOR RESEARCH USE ONLY (RUO)

Storage:

Use a manual defrost freezer and avoid repeated freeze-thaw cycles. Aliquot and store ≤ -20°C (stable for 24 months from date of receipt).

Verified Applications / Usage

Polyubiquitin chains exhibit diversity in length, linkage type, and associated cellular functions. K48-linked Di-Ubiquitin serves as a valuable reagent in assays involving ubiquitin-binding proteins and as a substrate for ubiquitin-specific deubiquitylating enzymes (DUBs).

Physical Characteristics

Species: Homo sapiens (Human)

Predicted MW (kDa): 17 kDa

Source: E.coli BL21(DE3) A.I.

Purity: 95%

Concentration: 58 µM

Formulation: 10 mM HEPES, pH 7.6

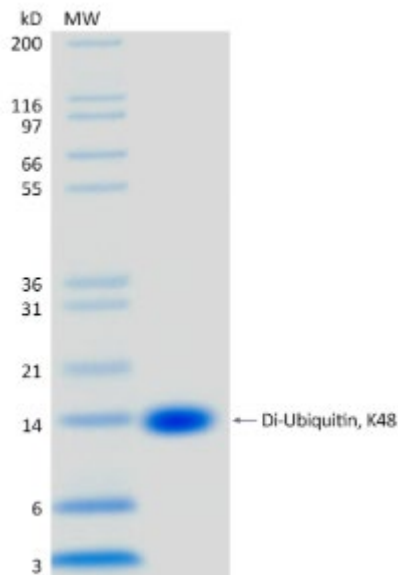
Shipping: The product is shipped with dry ice. Upon receipt, store it immediately at the temperature recommended below.

Stability/Storage: Use a manual defrost freezer and avoid repeated freeze-thaw cycles. Aliquot and store ≤ -20°C (stable for 24 months from date of receipt).

Quality Assurance

Purity & SDS-PAGE

Protein ID: Ubiquitin



2 µg K48-linked Di-Ubiquitin run on 4-12% SDS-PAGE gel under reducing conditions, then visualized with Colloidal Coomassie Blue Stain.

Activity Assay

Fully hydrolyzed by the K48-specific OTUB1* deubiquitylase

Background

Description

K48-linked ubiquitin dimer linked between glycine 76 of one ubiquitin and lysine 48 of the following ubiquitin

Accession Number: Ub

Entrez Gene ID: UBB

Protein Sequence

MQIFVKTLTGKTITLEVEPSDTIENVKAKIQDKEGIPPDQQRLIFAGKQLE
DGRTLSDYNIQKESTLHLVLRRLRGG