

Product Name: SENP1

Alternate Names:

Product Code: TDE-069

Quantity: 50 µg

FOR RESEARCH USE ONLY (RUO)

Storage:

Use a manual defrost freezer and avoid repeated freeze-thaw cycles. Aliquot and store ≤ -70°C (stable for 24 months from date of receipt).

Verified Applications / Usage

Recombinant human Sentrin-specific protease 1 removes SUMO modifications from proteins in in vitro reactions. This is particularly useful in cleaving SUMO tags from recombinant proteins. Appropriate enzyme concentrations are specific to the application.

Physical Characteristics

Species: Homo sapiens (Human)

Predicted MW (kDa): 28 kDa

Source: E.coli BL21(DE3) A.I.

Purity: 95%

Concentration: 50-60 µM

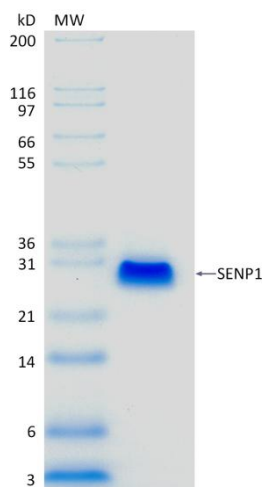
Formulation: 40 mM HEPES, 100 mM NaCl, 10% Glycerol, 1 mM EDTA, 1 mM TCEP, pH 7.6

Shipping: The product is shipped with dry ice. Upon receipt, store it immediately at the temperature recommended below.

Stability/Storage: Use a manual defrost freezer and avoid repeated freeze-thaw cycles. Aliquot and store ≤ -70°C (stable for 24 months from date of receipt).

Quality Assurance

Purity & SDS-PAGE



2 µg SENP1 run on 4-12% SDS-PAGE gel under reducing conditions, then visualized with Colloidal Coomassie Blue Stain.

Protein ID: Sentrin-specific protease 1

Activity Assay

100 nM SENP1 will cleave 50 µg SUMOylated test protein in 2 hours at 4°C.

Background

Description

Recombinant human SENP1 (H411-L644) is a SUMO-specific protease that is useful for deSUMOylating proteins in vitro.

Accession Number: Q9P0U3

Entrez Gene ID: SENP1

Protein Sequence

GPGHKLTDSDEFPEITEEMEKEIKNVFRNGNQDEV LSEAFRLTITRKDI
 QTLNHLNWLNDEIINFYMNMLMERSKEKGLPSVHAFNTFFFTKLKTAGY
 QAVKRWTKKVDVFSVDILLVPIHLGVHWCLAVVDFRKKNITYYDSMGGIN
 NEACRILLQYLKQESIDKKRKEFD TNGWQLFSKKSQEIPQQMNGSDCG
 MFACKYADCITKDRPINFTQQHMPYFRKRMVWEILHRKLL