

Product Name: JOSD1

Alternate Names:

Product Code: TDE-068

Quantity: 50 µg

FOR RESEARCH USE ONLY (RUO)

Storage:

Use a manual defrost freezer and avoid repeated freeze-thaw cycles. Aliquot and store ≤ -70°C (stable for 24 months from date of receipt).

Verified Applications / Usage

Physical Characteristics

Species: Homo sapiens (Human)

Predicted MW (kDa): 23 kDa

Source: E.coli BL21(DE3) A.I.

Purity: 95%

Concentration: 15-30 µM

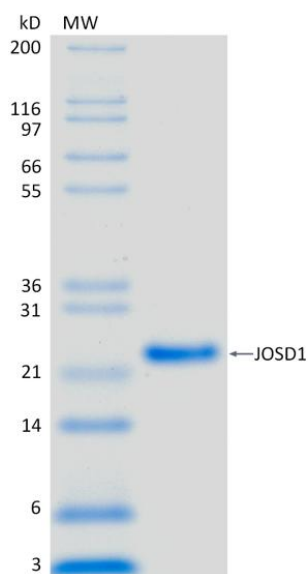
Formulation: 40 mM HEPES, 100 mM NaCl, 10% Glycerol, 1 mM EDTA, 1 mM TCEP, pH 7.6

Shipping: The product is shipped with dry ice. Upon receipt, store it immediately at the temperature recommended below.

Stability/Storage: Use a manual defrost freezer and avoid repeated freeze-thaw cycles. Aliquot and store ≤ -70°C (stable for 24 months from date of receipt).

Quality Assurance

Purity & SDS-PAGE



2 µg JOSD1 run on 4-12% SDS-PAGE gel under reducing conditions, then visualized with Colloidal Coomassie Blue Stain.

Protein ID: Josephin-1

Background

Description

Recombinant human JOSD1 is a deubiquitylating enzyme of the Josephin Domain family. JOSD1 has a strong preference for ubiquitin ester substrates rather than ubiquitin amide bonds.

Accession Number: Q15040

Entrez Gene ID: JOSD1

Protein Sequence

GPSGMSCVPWKGDKAKSESLELPQAAPPQIYHEKQRRELCALHALNN
VFQDSNAFTRDTLQEIFQRLSPNTMVTPHKKSMLGNGNYDVNVIMAAL
QTKGYEAVWWDKRRDVGVIALTNVMGFIMNLPSSLCWGPKLPLKRQH
WICVREVGAYYNLDSKLMPEWIGGESELRKFLKHHLRGKNCELLLVV
PEEVEAHQSWRTDV