

Product Name: UBE2L3

Alternate Names: UbchH7, UBE2ALA

Product Code: TE2-010

Quantity: 100 µg

FOR RESEARCH USE ONLY (RUO)

Storage:

Use a manual defrost freezer and avoid repeated freeze-thaw cycles. Aliquot and store ≤ -70°C (stable for 24 months from date of receipt).

Verified Applications / Usage

Recombinant Ubiquitin Conjugating Enzyme 2L3 accepts activated ubiquitin from Ubiquitin Activating Enzyme 1 (an E1) in in vitro reactions. This charged E2 subsequently transfers ubiquitin to a catalytic cysteine found in HECT- and RBR-class E3 ligases. Appropriate enzyme concentrations are specific to the application.

Physical Characteristics

Species: Homo sapiens (Human)

Predicted MW (kDa): 18.2 kDa

Source: E.coli BL21(DE3) A.I.

Purity: 95%

Concentration: 50 µM

Formulation: 40 mM HEPES, 100 mM NaCl, 10% Glycerol, 1 mM EDTA, 1 mM TCEP, pH 7.6

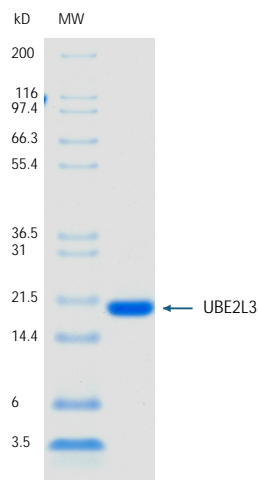
Shipping: The product is shipped with dry ice or equivalent. Upon receipt, store it immediately at the temperature recommended below.

Stability/Storage: Use a manual defrost freezer and avoid repeated freeze-thaw cycles. Aliquot and store ≤ -70°C (stable for 24 months from date of receipt).

Quality Assurance

Purity & SDS-PAGE

Protein ID: Ubiquitin-conjugating enzyme E2 L3



2 µg UBE2L3 run on 4-12% SDS-PAGE gel under reducing conditions, then visualized with Colloidal Coomassie Blue Stain.

Activity Assay

Verified in Ubiquitin Charging Assay.

Background

Description

Ubiquitin-conjugating enzyme E2 UBE2L3 (UbcH7) is a class-III E2 that accepts Ub from E1 and delivers it to catalytic cysteines within HECT- or RBR-type E3 ligases, including Parkin, ARIH1/ARIH2 and the HOIP subunit of LUBAC, thereby initiating linear, Lys48- or Lys63-linked chain formation and regulating pathways such as NF- κ B signaling and mitophagy. The recombinant protein contains full-length human UBE2L3 expressed and purified for rapid transthiolation with ubiquitin.

Recombinant UBE2L3 is a versatile reagent for in vitro ubiquitylation reactions using recombinant HECT and RBR E3 ligases.

Accession Number: P68036

Entrez Gene ID: UBE2L3

Protein Sequence

GPGSMAASRRLMKELEEIRKCGMKNFRNIQVDEANLLTWQGLIVPDNP
PYDKGAFRIEINFPAEYPFKPPKITFKTKIYHPNIDEKGQVCLPVISAENW
KPATKTDQVIQSLIALVNDPQPEHPLRADLAEYISKDRKKFCKNAEEFT
KKYGEKRPVD